



1 Victoria Drive , Walmer , Port Elizabeth , 6070

041/5811877



HAPPY PLACES, HAPPY FACES

Hello Everyone.

I was having a bit of a rough day at work last week and had to come to the club to sign some papers. I had only been here a few minutes when I realized that I was really smiling for the first time that day. What a happy place this was. The new greens mower was in action and some training was in progress. Garth and his greens staff, Crosby & Micheal were all grinning from ear to ear. The 9th green was looking great. The rough had had a haircut and looked years younger. (I hope they found the balls I lost in it on Thursday!) In the club house, Barry and company were joking with the half-way golfers as usual. In the lounge Gloria & co were cleaning and sharing an uproarious joke. Johnny, Eric and Simon were as usual going about their business with gusto. Everyone greeted me with a smile.

Folks, what a pleasure. This club is indeed a happy place. The course is looking better every day, the Bowlers are back on the rinks and the Squashies are happily bashing away in the evenings.

I would like to compliment George and all the staff for the way they are all pulling together to move us forward into the future.

Walmer Country Club is, and always will be, a very special place.

Thank you

Chris

SQUASH

First of all, congratulations to our 3rd league guys who won their league this year in the winter inter-club leagues. They automatically advance to the 2nd league next year so good luck chaps. I'm sure you will be up to the challenge.

We have just finished our end of year internal Summer League which was very successful. Next year's Summer league will start in February sometime so watch this space.

Bowls

Greens are slowly starting to repair and some rinks are now playable.

Thanks to the WCC committee for their help in :

- Organizing drainage for the greens which hopefully will result in no further damage occurring.
- The flood light which has been installed as it has helped a lot.

Twilight Bowls began on Tuesday 06/11 and, greens permitting, will start to generate revenue. The Bowlers have jumped in to help the club through this period of no revenue with the German Club bar earning R20000 net and the Sunday Lunch R2000. Well done to all those who worked so hard.

Our ladies team won the E.P Pairs which is remarkable considering all the top woman bowlers who have left. Well done Girls.

We have introduced coaching sessions on Saturday's at 11.00am, so if you know of anyone interested in bowling this is a great opportunity. There is a 3 month trial period for anyone wanting to try out the game...no obligation...no equipment required other than flat shoes. Please tell friends and family.

Larry

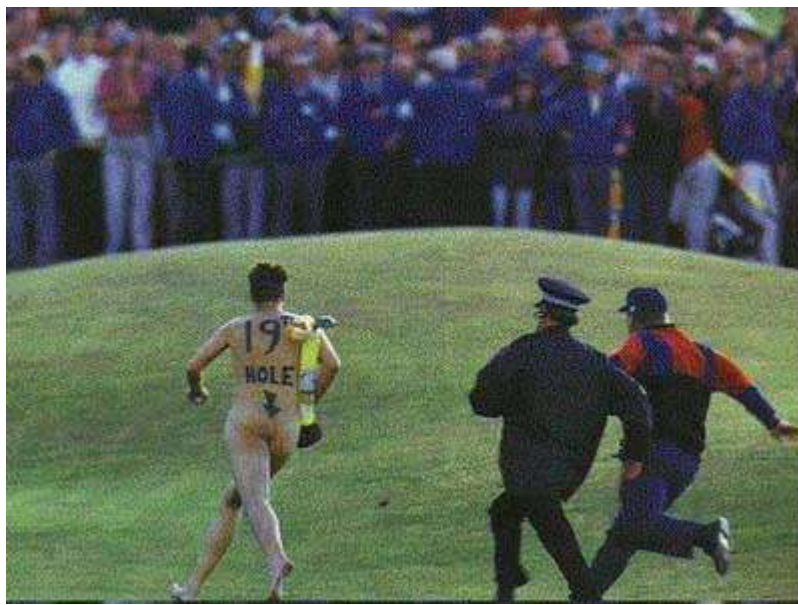
Upcoming Christmas event

Folks, we will be holding our **Christmas competition on the 22nd December**. It will be an IBS competition with **lots of prizes**.

We would like to make it a Family day and will therefore be **organizing a spit braai**, and would like as many families as possible to attend.

This will be a great opportunity for bowls, golf and squash to meet. The cost of the braai will be R70/pp or R200/per family of four and R30/per child under the age of 12.

So watch this space and the notice boards for more information. Let's get the season off to a flying start.



General Update

We are still waiting for a decision by Council whether or not they want to buy our land. According to the latest Municipal Bulletin, they are due to announce their decision on December 6th, but we've heard that sort of thing before now so don't hold your breath!! Whatever the outcome it will take a number of years to carry out, so we will continue to run normally for a long time yet. Rumours abound and we have been told that, for example, the squash courts have been sold, the golf course is closed

and who knows what else. So please let all your friends know that we are still operating at full steam and we still have the best, most challenging course in town.

In spite of complaints about the greens (which we are addressing and which will take a little time,) the scores coming in show that some of you are shooting the lights out every Wednesday and Saturday, so they can't be that bad, can they?

With regard to the possible access through the Walmer Link, we had another meeting with Transnet the other day and were informed that the regulations regarding level crossings have recently changed and, according to these, Transnet has rejected the application to cross the line at 11th Avenue.

We are working together with the Link developers to appeal against this decision. The matter is being taken up with Transnet Officials on Friday in Cape Town.

Some of Walmer Country Club's Staff at work with new equipment.

Micheal on new Fairway mower , Crosby on new Greensmower



Whelile & Phillip on older machines



Sipho , Victor & Clive in the gardens



Percy and Clive



Micheal has a huge smile....., new machinery?





" Golf is a puzzle without an answer. I have played the game for 40 years and I still haven't the slightest idea how to play" – Gary Player

Some new equipment arrives



Thanx to Colin Liebertrau for restoring golfcart for use by course staff



Once the reeds are removed , this picture will be even better.....



Thanx to Vasco for restoring gardens & general look around club...

WALMER COUNTRY CLUB

**SATURDAY RESULTS
MONTHLY MEDAL**

06-Oct-12

A DIV (0 - 9)

| | | |
|---|-----------|--------------|
| 1 | L BARNARD | 81 - 09 = 72 |
| 2 | H BARNARD | 80 - 07 = 73 |
| 3 | J WATTS | 81 - 08 = 73 |

B DIV (10 - 16)

| | | |
|---|------------|--------------|
| 1 | F OLIVIER | 85 - 16 = 69 |
| 2 | H PHILLIPS | 81 - 11 = 70 |
| 3 | B MENTZ | 85 - 15 = 70 |

C DIV (17 - UP)

| | | |
|---|-------------|--------------|
| 1 | M CREIGHTON | 88 - 19 = 69 |
| 2 | S BRAZZALE | 92 - 23 = 69 |
| 3 | R CAMPHER | 88 - 18 = 70 |

WALMER COUNTRY CLUB

WEDNESDAY RESULTS
IBS (HI-Q)

03-Oct-12

A DIV (0 - 12)

| | | | |
|---|------------|--------------|----|
| 1 | R FERREIRA | 65 + 01 = 66 | 42 |
| 2 | M HEUNIS | 75 - 05 = 70 | 38 |

B DIV (13 - 20)

| | | | |
|---|-----------|--------------|----|
| 1 | D NIEKERK | 80 - 13 = 67 | 41 |
| 2 | B BIRCH | 90 - 19 = 71 | 37 |

C DIV (21 - 36)

| | | | |
|---|------------|---------------|----|
| 1 | I GUERRA | 100 - 31 = 69 | 38 |
| 2 | S BRAZZALE | 93 - 23 = 70 | 37 |

